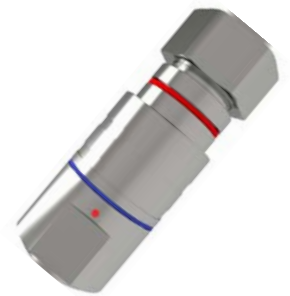
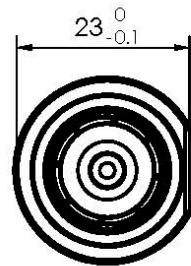
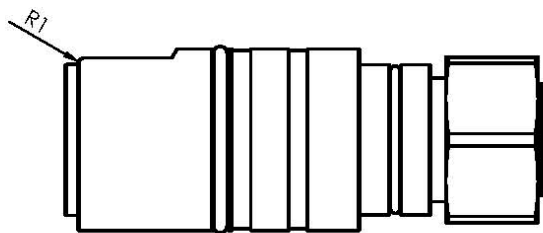
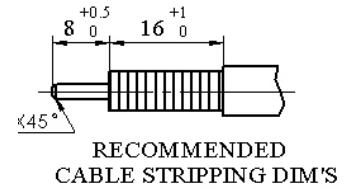
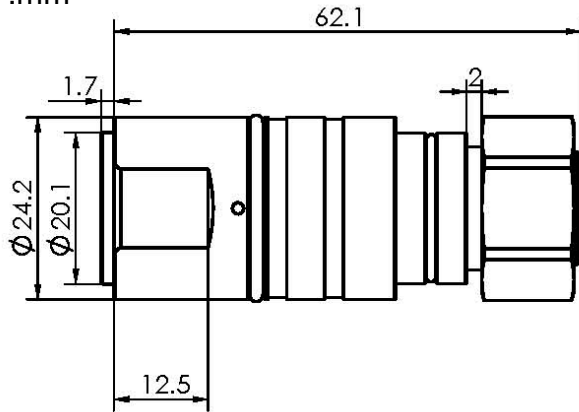


## Specification

Product Description	4.3/10 Screw Male Compression Connector for 1/2" Annular Cable	Date: 2019.12.13
Part NO.	AFDF07-3	Ver. 3

UNIT:mm



## Reference Standard

IEC61169-54

## Electrical Performance

Nominal Impedance ( $\Omega$ )	50
Frequency Range	DC~6GHz
VSWR	$\leq 1.10(0-3\text{GHZ})$ $\leq 1.20(3-6\text{GHZ})$
VSWR(DTF)	$\leq 1.05(0-3\text{GHZ})$ $\leq 1.10(3-6\text{GHZ})$
PIM (dBc)	$\leq -160(2*43\text{dBm})$
Insertion Loss	$\leq 0.05\sqrt{F}(\text{GHz})$
Insulation Resistance(M $\Omega$ /500VDC)	$\geq 5000$
Proof Voltage (V/AC)	$\geq 2500$
Contact Resistance (m $\Omega$ )	$< 1.0$ (Inner Conductor) $< 1.0$ (Outer Conductor)

Mechanical Performance	
Mating Cycles	500
Nut Torque	5N.m
(Nut) Whorl Pull	500N
Tensile Force (Cable-Connector)	500 N
Torsion (Cable-Connector)	5 N.m
Weight	115.27g

Material and Plating		
Connector Parts	Material	Plating
Inner Conductor	Spring Copper	Ag 5μm
Outer Conductor	Brass	Copper-tin-zinc 2μm
Nut	SUS304	
Insulator	TPX	
O-Ring	Silicone Rubber	

Environment	
Temperature Range	-40°C~+85°C
Weather Standard	IEC60068 40/ 085/ 21
Thermal Shock	IEC60068-2-14-Na
Vibration	IEC60068-2-6-Fc
Shock	IEC60068-2-27
Waterproofing Standard	IP68
RoHS	Compliant(EU and China)

Assembly				
Inner conductor Installed and outer conductor Compressed.				
Cable Supported	Cable Type Supported		Cable Supported	Cable Type Supported
Amphenol	AFY-50-12R		Andrew	LDF4-50A
Draka	RF1/2"-50		ANDREW	HL4RP-50A (Plenum)
Eupen	EC4-50		RFS	ICA12-50JPLW (Plenum)
RFS	LCF12-50J			

NOTE: The technical specification contains proprietary information and such information may not be disclosed to others for any particular purpose or used for manufacturing purposes without written permission from Amphenol Fuyang.

VER HISTORY			
Ver	Revised by	Revision note:	Date
1	libo	Add an o-ring to the connector body	2019.10.11
2	libo	Increase the distance between nut and connector from 1mm to 2mm	2019.10.23
3	libo	add R1.0	2019.12.13